



System 50 - Aluminium (AL)

All components RoHS-compatible.

Design:

- Extraction arm for mounting on table
- Working range 445-1425 mm
- Recommended airflow 45 to 85 m³/h
- Diameter of tube Ø50 mm
- Tubes made of anodized Aluminium - surface 10 µ
- Joints made of shatterproof, chemical resistant polypropylene (PP)
- Colour of joints: white (-5), red (-4) or black (-050)
- All O-rings maintenance free
- Integrated valve. When in an open position out of the flow path to maintain the maximum amount of flow
- All threaded stays, springs and thumbscrews made of acid-proof stainless steel (AISI 316L)
- Acid-proof POP[®] rivets for increased durability in aggressive environments
- All hoods can be provided with a protective netting to reduce the risk of extracting foreign objects
- Dismantling of the arm without tools for cleaning

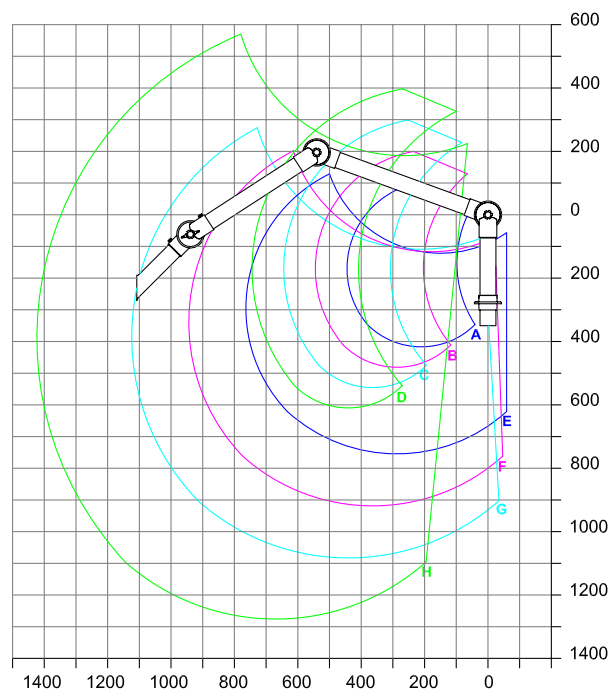


Links: [Pressure drop chart](#), [Mounting](#), [User's manual](#), [Capture efficiency](#)

Working area

We do not recommend a stationary working position in the upper or lower working area.

All units in mm



- A: Model 50-27-1-4 /-5 /-050
- B: Model 50-37-1-4 /-5 /-050
- C: Model 50-47-1-4 /-5 /-050
- D: Model 50-57-1-4 /-5 /-050
- E: Model 50-3727-1-4 /-5 /-050
- F: Model 50-4737-1-4 /-5 /-050
- G: Model 50-5747-1-4 /-5 /-050
- H: Model 50-8747-1-4 /-5 /-050